

This page details the steps associated with writing and testing a simple windows application using EA.

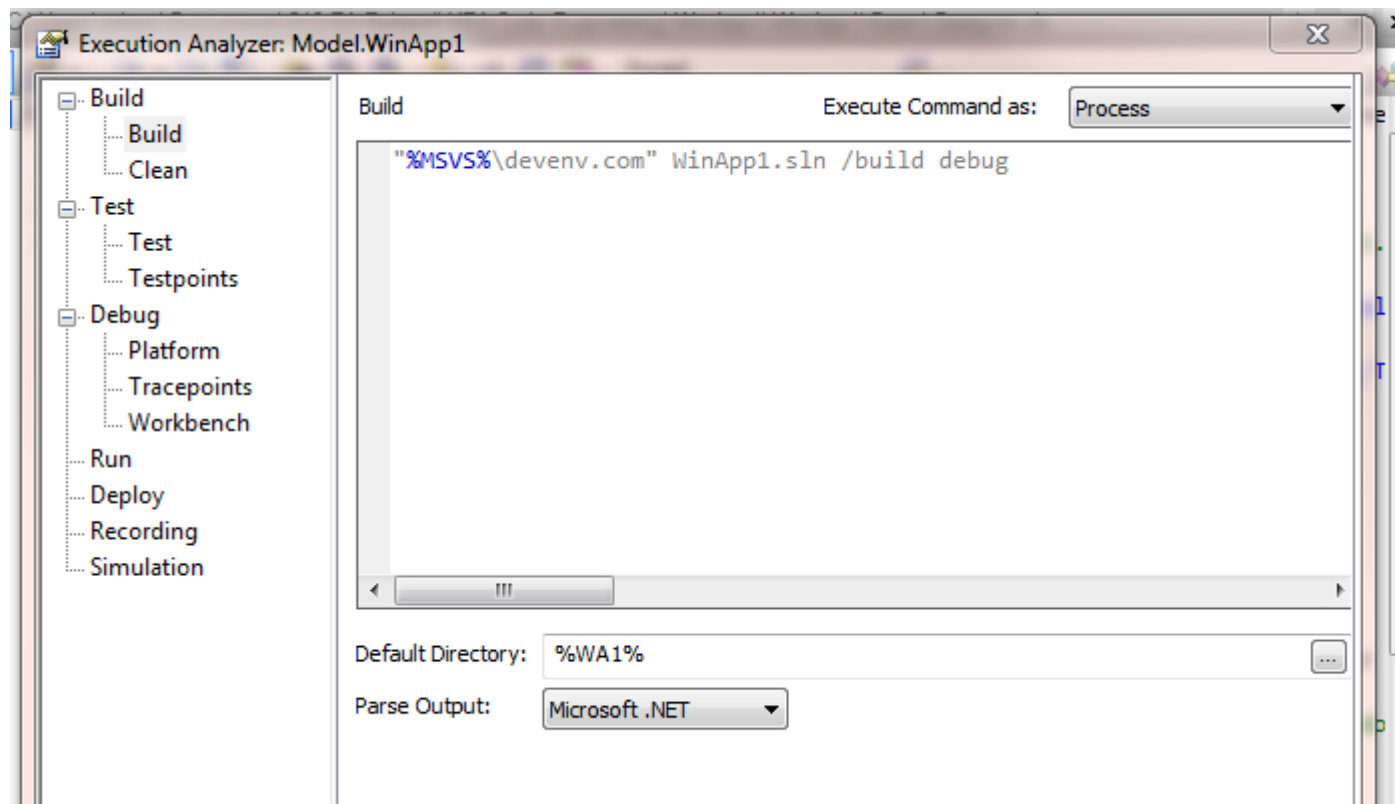
- Set up the basic application
 - Start by building a simple windows application using VS-2010
 - in my case a simple form with a button which displays a message

Having coded the application and built to check it works then

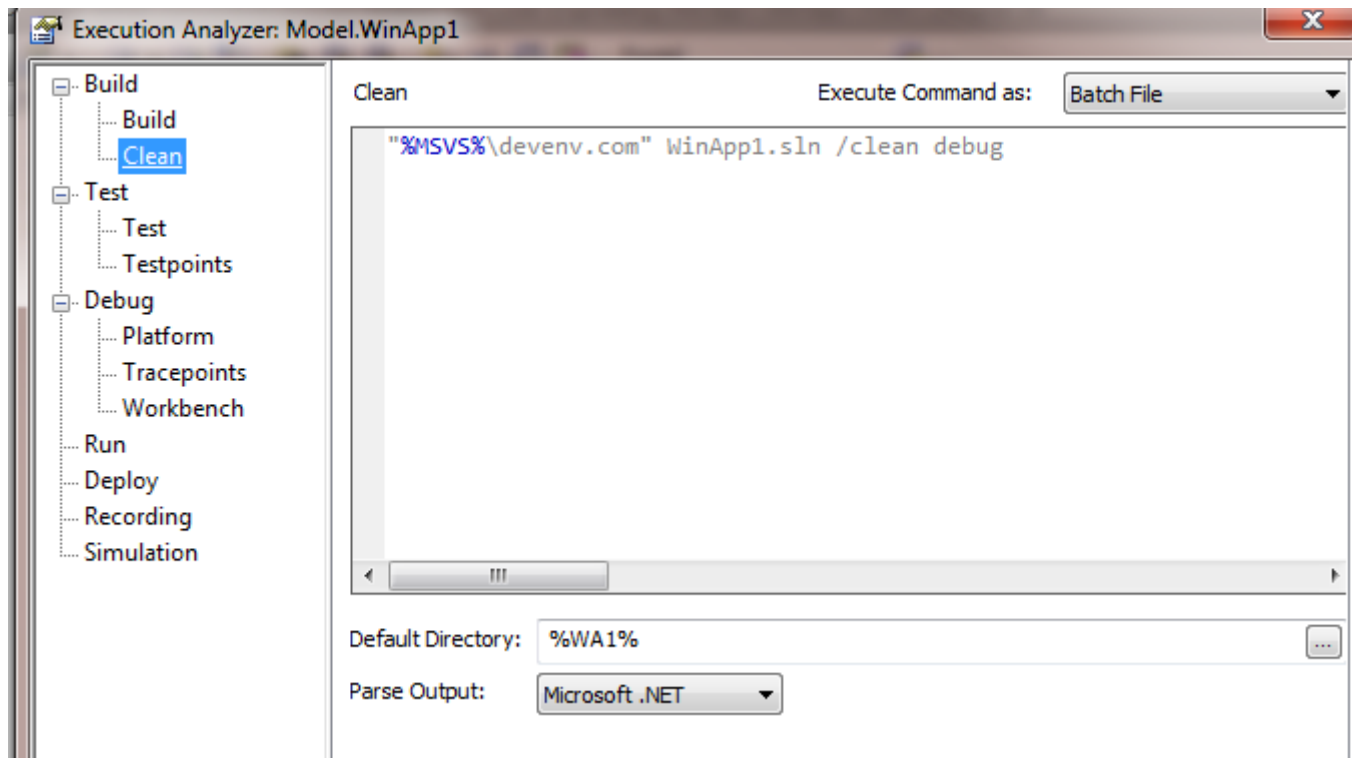
- Create a package in EA
 - Use the Code Engineering Import Source Code directory to import the code
 - Check that you can access the source code (use F12 or context menu to View Source Code)
- To reference the code set up an alias in the Settings | Local Directories and Paths
 - Set the path to the root of the source code tree (normally where the solution file is located) e.g. C:\Users\adrian\Documents\013 EA Related\XEA Code Engineering\WinApp1
 - Give it a suitable ID e.g. WA1
 - Set the Type e.g. VBNet

Also ensure that there is an alias for the compiler environment (i.e. devenv.com for VS stuff) e.g. C:\Program Files (x86)\Microsoft Visual Studio 10.0\Common7\IDE, in this example MSVS

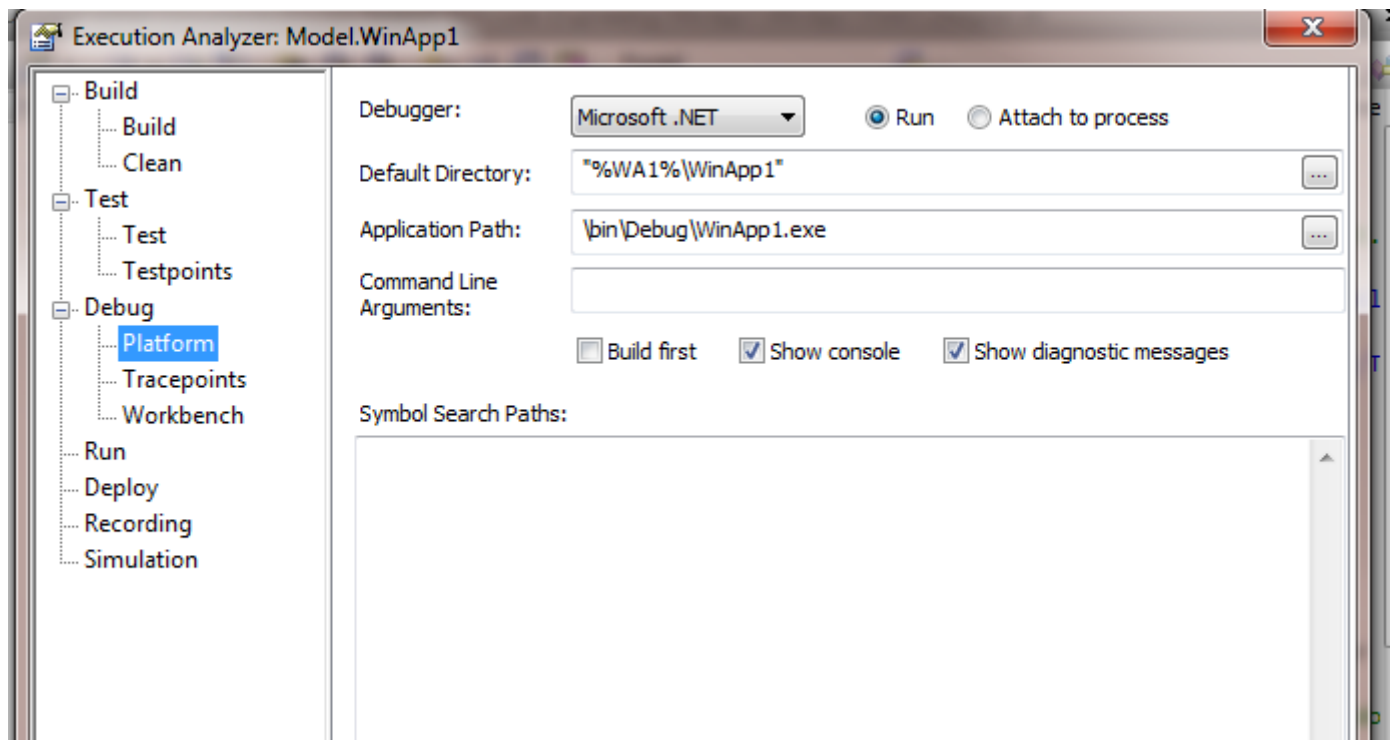
- To create the scripts
 - Select Analyzer | Execution Analyzer
 - Create a New Script (this will in fact be a set of scripts for build, debug etc)
 - Place in the appropriate package i.e. the one where the code has been import
 - Create a BUILD script - see settings in screenshot below



- Create a CLEAN script - see settings in screenshot below



- Create a Debug script - see settings in screenshot below



Important to ensure that the directories are set correctly, this was an issue I faced when I set up the debug script in that I needed to

1. Ensure that the path was in " as there were spaces
2. That the route was set correctly to support the application path - it is the combination of the default directory and application path that when concatenated reference the correct file, otherwise some strange messages appear!

Adding code whilst in EA

When I add a class and then generate / add code / edit etc within EA the new source file does not get added to the project file.

In my simple test with a simple class I added the following entry to the project file.

```
<Compile Include="MyTestClass.vb">  
  <SubType>Form</SubType>  
</Compile>
```

With this added the build including the new source file worked OK.

Copyright: AL - 31/03/2013