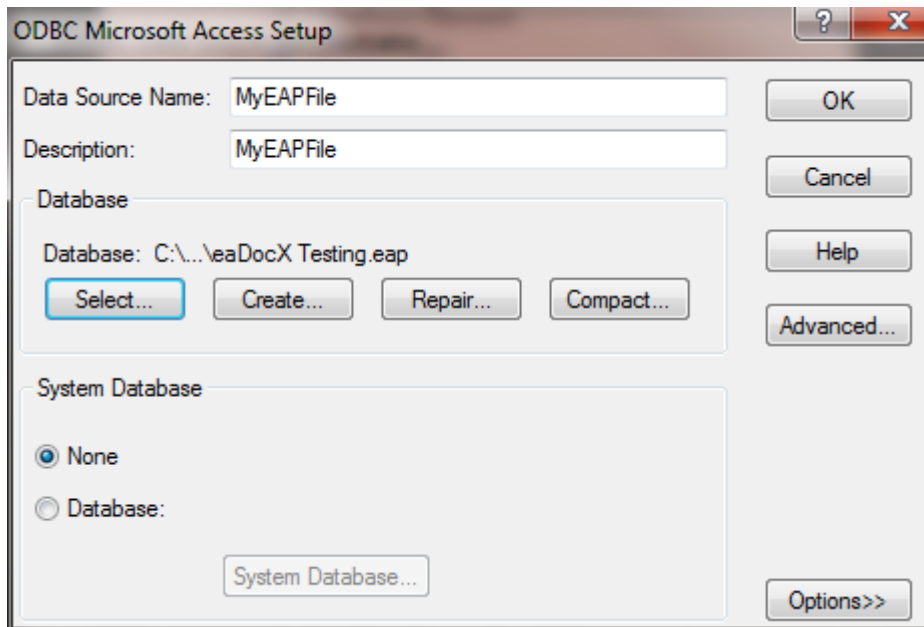


You may wish to get details of the EAP DB Schema.

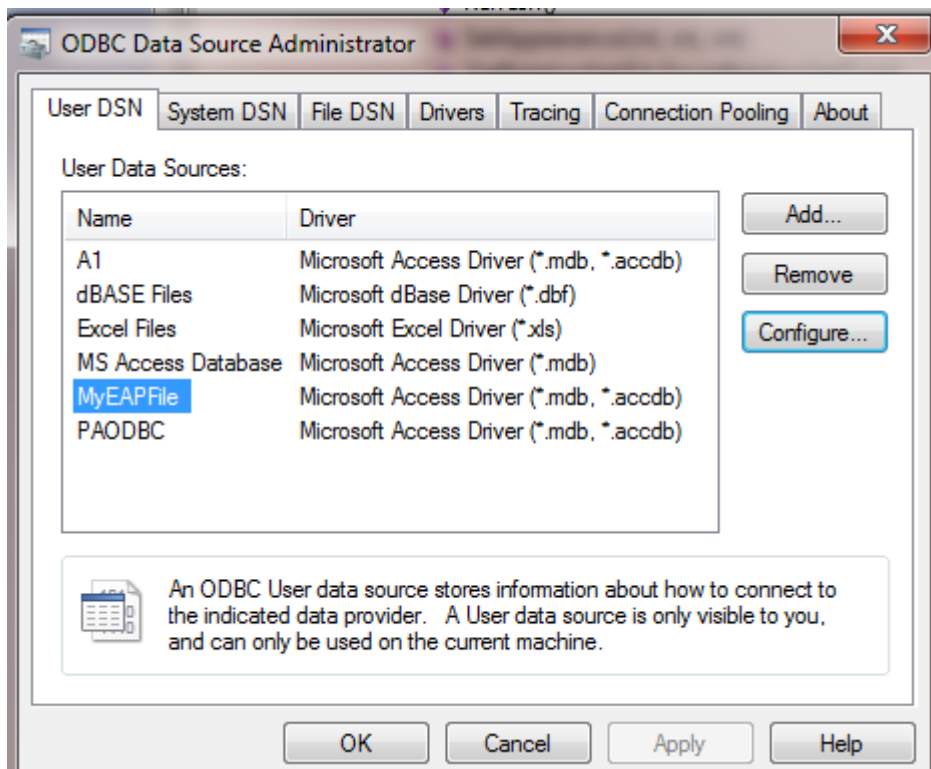
This can be done using EA's Code Engineering option "Import DB Schema from ODBC".

The steps required are:

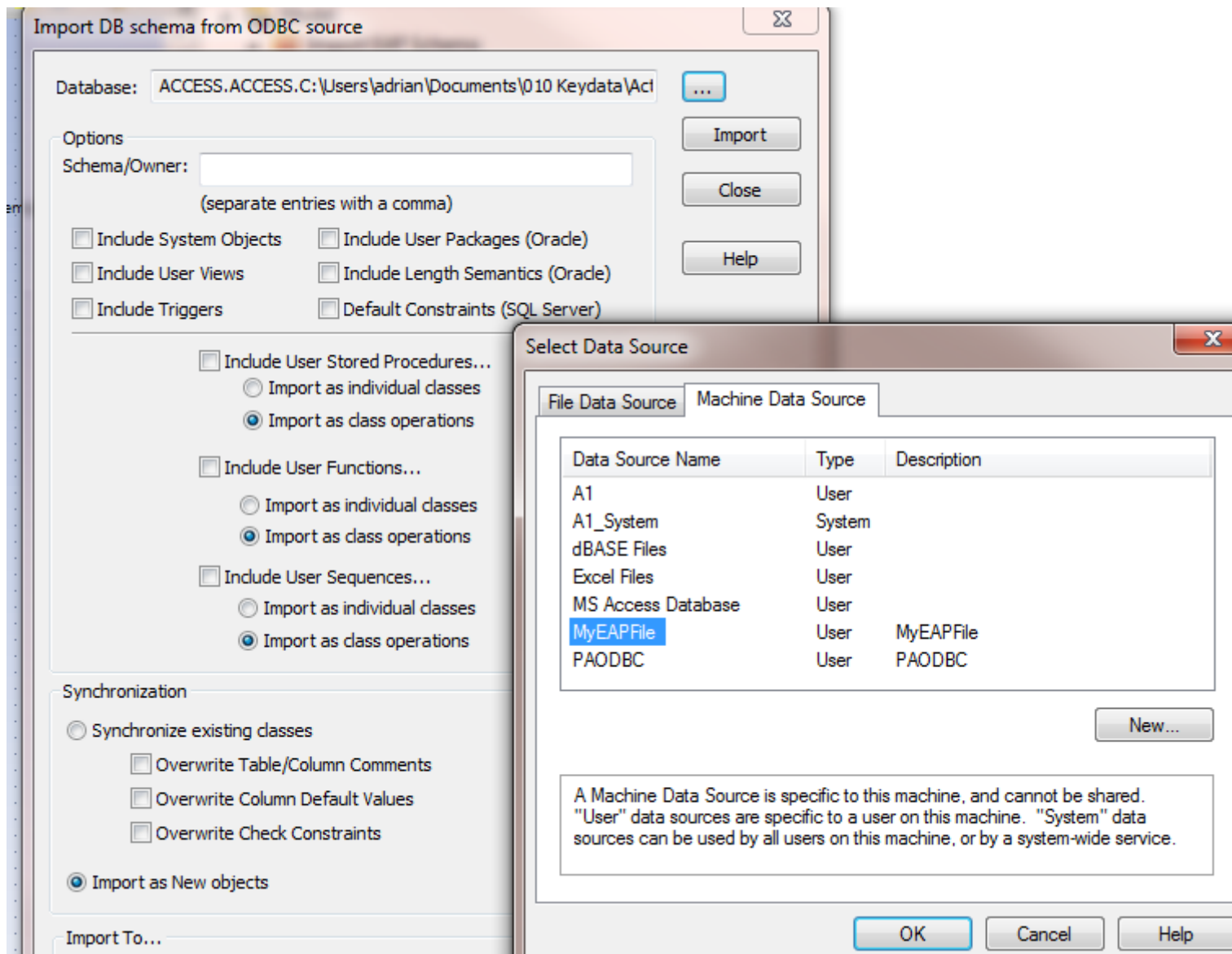
1. Create an ODBC source that connects to an existing EAP File



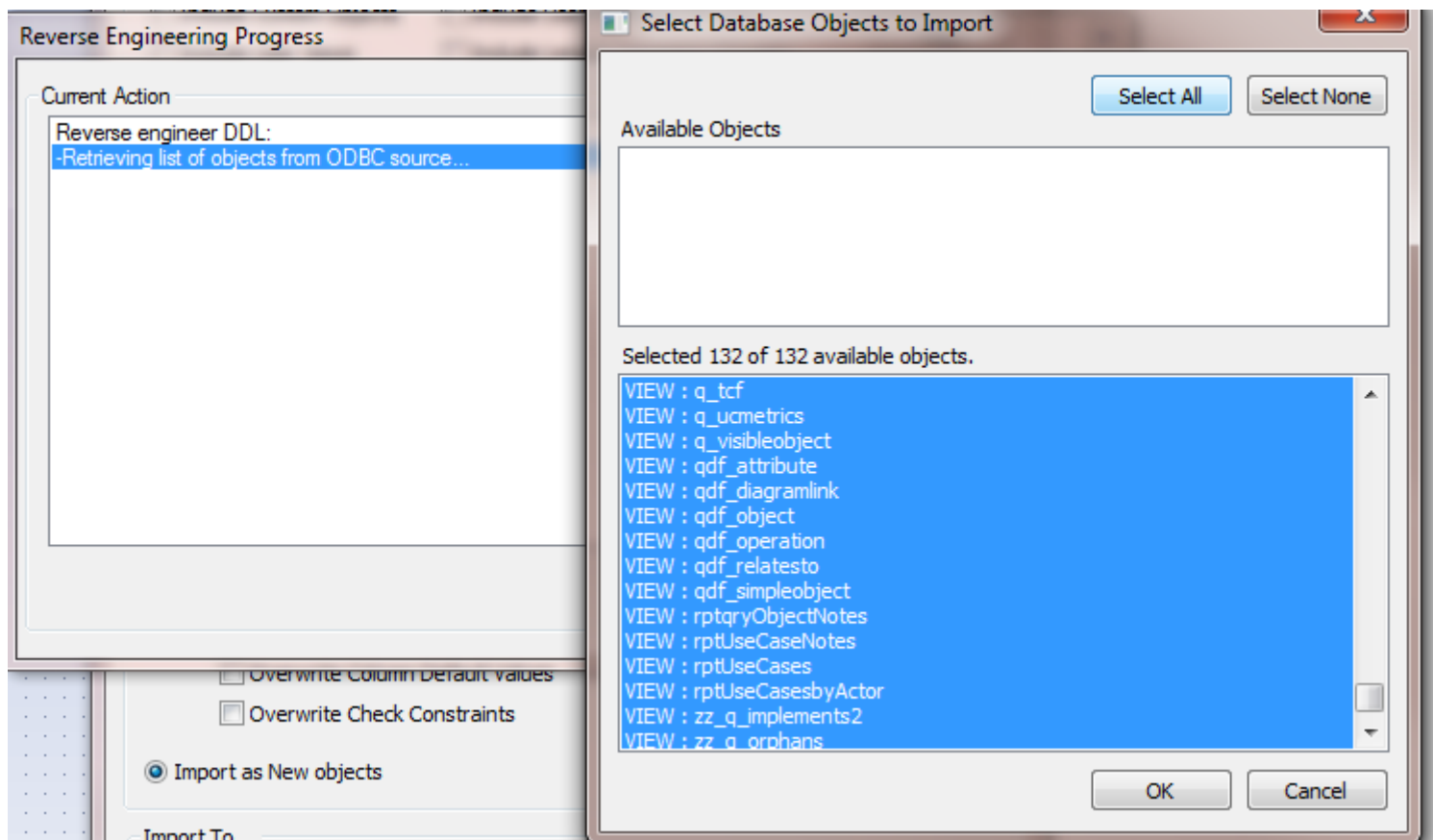
1. Select ODBC Source



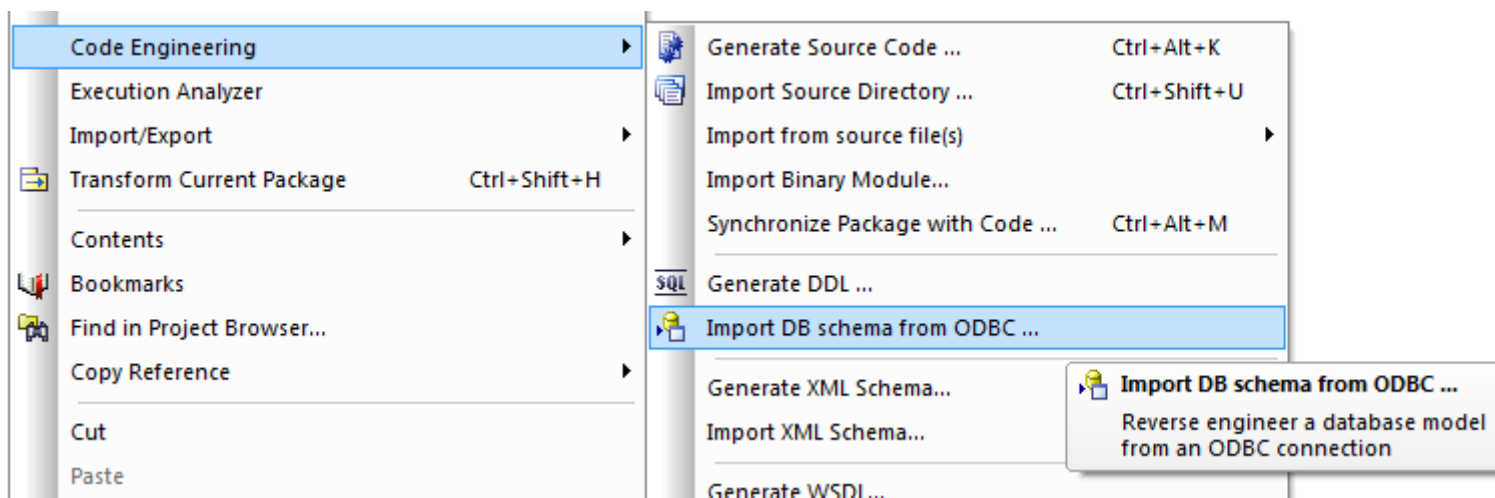
1. Select Data Source



1. Select tables and/or views in list as table / view stereotyped classes



1. Press OK



The import will proceed and at the end you will have the tables/views selected within the model

- «view» qdf\_simpleobject
- «view» rptUseCaseNotes
- «view» rptUseCases
- «view» rptUseCasesbyActor
- «view» rptqryObjectNotes
- ▷ «table» t\_attribute
- ▷ «table» t\_attributeconstraints
- ▷ «table» t\_attributetag
- ▲ «table» t\_authors
  - ◆ «column» AuthorName
  - ◆ «column» Roles
  - ◆ «column» Notes
  - ◆ «PK» PrimaryKey(Text)
- ▷ «table» t\_cardinality
- ▷ «table» t\_category
- ▷ «table» t\_clients
- ▷ «table» t\_complexitytypes
- ▷ «table» t\_connector

**Copyright: AL - 28/03/2013**